

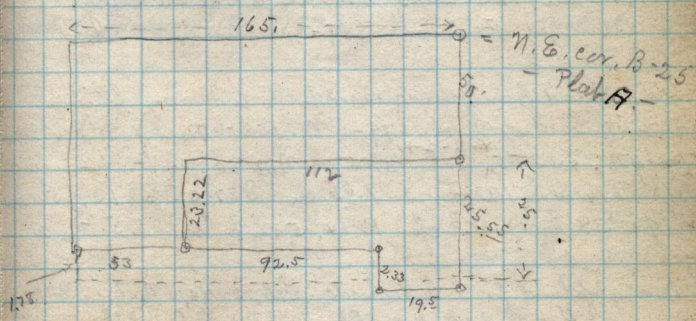
Jan'y 25-1889

Survey for Willard Key, for 4 Rods in width N. & S. by 16 Rods in length ^{E. & W.} of the N. End of Lots 1-2 in B-12 Plat "A" O-C-S.

Survey for Joseph F. Wheelwright, Feb. 1st 1889. Copy of deed from Lucinda A. Burton & others, to Jos. F. Wheelwright, dated 11th Sept. 1878 - Recorded X-351 - Part of S.E. 1/4 Sec. 19 - Sp 6-N. R-1W, Beg. 50 Rds N & 44 Rds S. from N.E. cor. said 1/4 Sec. W. 40. Rds. S. 60. Rds. E. 40 Rds N. 60. Rds to beg. excepting strip 100 ft wide occupied by C. R.R.R.

Copy of deed from Sarah Small to Jas. H. Spargo dated July 5-1888 - Recorded X-238 - Part of Lot 2-B-25-P-A-O-C-S - Beg. 165. ft W. from S.E. cor. said Lot. N. 85 ft. W. 20. ft. S 85 ft. E 20 ft to beg.

Copy of deed from Lorin Farr to F. J. Keisel ^{+ D. 22 rods} dated March 18-1881 - O-271 - Part of Lot 6-B-23-Plat A O-C-S - Beg. 30 ft E. from N.W. cor. E. 135. ft. S. 8 Rods & 135. ft. N. 8 Rods to beg.



✓ Copy of deed from Lorin Farr to F. J. Keisel dated March 18-1881 - O-269 - Part of Lot 6-B-23 Plat A - O-C-S - Beg. at N.W. cor. said Lot. E. 30 ft. S 8 Rods N. 30 ft. N. 8 Rods to beg.